



Our philosophy is directed towards your development as a mature, independent young adult, well able to direct and organise your own academic studies, social life and role in society. Our ultimate aim is that you will thrive in whatever you choose to do once you have completed your studies at Arrow Vale Sixth Form.

***PLEASE NOTE : All courses are subject to change dependent on student uptake and suitability***



Central Region  
Schools Trust  
Founded by the RSA

Sixth Form  
CURRICULUM



# Applied Science

## Course Title

Applied Science

## Awarding Body

Edexcel

## Course Level

BTEC Level 3 National  
Extended Certificate 2  
Years

## Course Description

The BTEC Level 3 Certificate and Extended Certificate in Applied Science are vocational qualifications. The course is designed to give learners the knowledge, understanding and technical skills to prepare them for employment or to continue their study in higher education. The content is divided up into manageable sized topics allowing the learning of new and existing concepts to be secured before developing the skill of application. This style of course will enable to learners who prefer portfolio-based assessment; students will have to be committed throughout as the grading is through continuous assessment.

## Course Content

The course requires students to study aspects of Biology, Chemistry and Physics. The course develops students' scientific knowledge and practical skills, as well as introducing new areas. Over the year students will study modules in: Fundamentals of science, Scientific Practical Techniques, Scientific Application and Physiology of Human Body Systems.

The course develops students' scientific knowledge and practical skills, as well as introducing new areas. Students complete compulsory units in principles and Applications of Science 1 and also Practical Scientific Procedures and Techniques.

Students completing the extended certificate must also complete a Science Investigation Skills unit and Unit 8: Physiology of Human Body Systems.

## Assessment

Principles and applications of Science (Unit 1) consists of 3 equally weighted 40 minutes written exams set and marked by Edexcel. There are 4 assignments in the first year as part of Unit 2; Scientific Practical Techniques and these units make up Year 1. In the second year there are a further 3 assignments as part of Unit 8 Physiology of Human Body Systems. Students will also complete a 3-hour practical assessment and 90-minute written exam for unit 3; Science Investigation Skills.

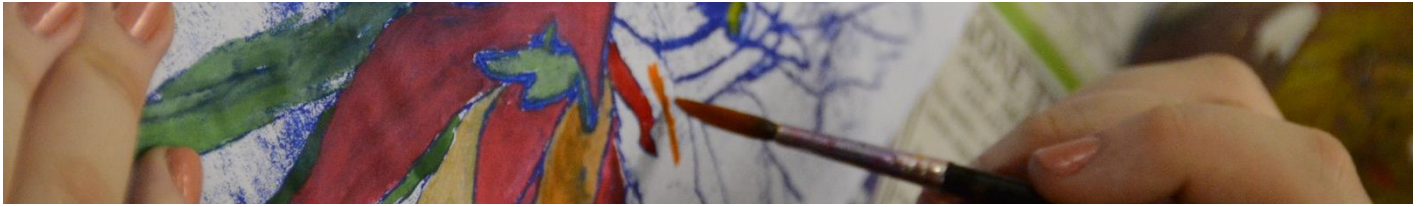
There are 4 assignments in the first year and a further 4 assignments in the second year.

## Progression Routes

BTEC Level 3 Certificate and Extended Certificate in Applied Science is a good academic option which combines well with many other subjects, science and non-science based. The course can lead to employment within a science laboratory environment or can be used as a steppingstone into a whole range of careers, e.g. lab technician, forensic scientist, botanist, and medical physicist.

## Entry Requirements

To allow success in this interesting and challenging course student are required to have an entry of at least a level 5 at GCSE Science or a Distinction in BTEC Science, with the additional of at least a level 5 in GCSE Maths.



# Art and Design

**Course Title**

Art and Design : Fine Art

**Awarding Body**

AQA

**Course Level**

A Level – 2 Years

**Course Description**

The A Level in Art and Design provides students with the opportunity to develop personal responses to ideas, observations, experiences, environments and cultures in practical, critical and contextual forms. The flexibility of the course allows students to work from their strengths in order to produce an extended collection of work based on an idea, concept, theme or issue which demonstrates the students' ability to sustain work from an initial starting point.

**Course Content**

Students will produce practical and critical/contextual work in one or more area including painting, drawing, mixed-media, sculpture, land art, installation, printmaking, film, animation, television, video and photography: lens-based and/or light-based media.

**Assessment**2 years A Level:

Year 12 work is mainly skills development in preparation for year 13,

- Personal Investigation, supported by a 1000-3000-word essay – 60%
- Externally set assignment project, with 15-hour exam – 40%

**Progression Routes**

The successful completion of an A Level in Art and Design will help to lay an appropriate foundation for further study of Art and Design or related subjects in Higher Education. In addition, it is suitable for the diverse range of candidates who wish to develop their interest in and enjoyment of Art and Design, and its value in lifelong learning.

**Entry Requirements**

Students must have undertaken GCSE Art and Design and achieved a level 4 or above.



# Biology

**Course Title**  
Biology

**Awarding Body**  
AQA

**Course Level**  
A Level – 2 Years

## Course Description

Biology is an exciting course where key concepts within the natural living world are studied and investigated. The content is divided up into manageable sized topics allowing the learning of new and existing concepts to be secured before developing the skill of application. Biological studies are continuously expanding in the modern world with new developments being discovered all of the time. Taking Biology can provide an entry into a range of higher education routes (not just science based) and can support many employment opportunities.

## Course Content

**Year 12** : Students will complete four topics in their first year of study comprising Biological molecules, Cells, Organisms exchange substances with their environment and finally Genetic Information, variation and relationships between organisms. There are 6 compulsory practical's that need to be completed in addition to other practical's to support your learning.

**Year 13** : Students will complete a further 4 units entitled Energy transfers in and between organisms. Organisms respond to changes in their internal and external environments, genetics, populations, evolution and ecosystems and finally the control of gene expression. There are a further 6 compulsory practical's that need to be completed in addition to other practical's to support your learning.

## Assessment

Throughout the course students will be provided with continuous support, guidance and examination practice to allow them to succeed during assessment.

A2 – 3 exam papers, each 2 hours long and you shall be assessed on your practical skills.

## Progression Routes

A Level Biology is a good academic option which combines well with many other subjects, science and non-science based, providing a firm foundation for those who wish to continue to higher education. Biology is necessary for many careers, including Forensic Science, Medicine, Dentistry, Pharmacology, Veterinary Science and Marine Biology. Many employers, for those who wish to seek employment also hold it in high regard.

## Entry Requirements

GCSE level 6 in Science/Biology, English and Mathematics.



# Business

## Course Title

Business

## Awarding Body

Edexcel

## Course Level

BTEC Level 3 National  
Extended Certificate – 2 Years

## Course Description

Students will learn how a business might evolve. From a small start-up business to a large multinational organisation, students will consider a range of different business types and gain an understanding of how the choice of business type might affect the objectives that are set. Students will also look at the internal workings of businesses, including their internal structure and how different functional areas work together.

## Course Content

There is a range of units to choose from, including The Business Environment, Working in Business, Business Decisions, Customers and Communication, Marketing and Market Research, Human Resources, Accounting and Resource Management. The topics will be determined by the interests of most of the students at the start of the course, though some are mandatory

## Assessment

Two units in year 12 and a further three units in year 13. One unit is a mandatory assessment task

## Progression Routes

Students can go onto study business at university or may choose to enter into a business apprenticeship ranging from marketing, HR, admin to operations. Some students may also consider running their own business; there is a strong influence of entrepreneurship on the course

## Entry Requirements

Level 4 in Maths and English Language.



# Chemistry

**Course Title**  
Chemistry

**Awarding Body**  
AQA

**Course Level**  
A Level – 2 Years

## Course Description

Chemistry is the science of matter; everything we touch, taste, smell, see and feel is made of chemicals. The content is divided up into manageable sized topics allowing the learning of new and existing concepts to be secured before developing the skill of application. Chemists' investigations are continuously expanding in the modern world by transforming the everyday materials around us into amazing things. Taking Chemistry can provide an entry into a range of higher education routes (not just science based) and can support many employment opportunities.

## Course Content

**Year 12 :** Students will complete three examinable units. The AS course contains questions on physical, organic and inorganic content. You will further study atomic structure, bonding, energetics, periodicity and an introduction to organic chemistry.

**Year 13 :** Students will complete three examinable units. Students go into further depth in their organic, inorganic and physical chemistry.

Topics that are covered in A level are thermodynamics, rate equations, electrode potentials, transition metals, nuclear magnetic resonance spectroscopy and an introduction to aromatic chemistry.

## Assessment

Throughout the course students will be provided with continuous support, guidance and examination practice to allow them to succeed during assessment.

A2 – 3 exam papers, each 2 hours long and you shall be assessed on your practical skills.

## Progression Routes

A Level Chemistry is a good academic option which combines well with many other subjects, science and non-science based, providing a firm foundation for those who wish to continue to higher education.

Chemistry is necessary for many careers, including Forensic Chemistry, Medicine, Chemical Engineering, Food and Flavour Chemistry and many more. Many employers, for those who wish to seek employment, also hold it in high regard.

## Entry Requirements

GCSE level 6 in Science/Chemistry, English and Mathematics.



# Drama

## Course Title

RSL Level 3 Diploma in Creative and Performing Arts

## Awarding Body

RSL

## Course Level

Level 3 Diploma – 2 Years

## Course Description

The core skills being developed in this qualification are:

- the ability to recognise and understand the interrelationship between performer, designer and director.
- the understanding that texts and extracts studied may represent a range of social, historical and cultural contexts.
- the ability to analyse and evaluate their work and the work of others.
- the ability to understand how performance texts can be interpreted and performed.

## Course Content

The aims and objectives of this qualification are to enable students to:

- develop and apply an informed, analytical framework for making, performing, interpreting and understanding drama and theatre.
- understand the place of relevant theoretical research in informing the processes and practices involved in creating theatre and the place of practical exploration in informing theoretical knowledge of drama and theatre.
- develop an understanding and appreciation of how the social, cultural and historical contexts of performance texts have influenced the development of drama and theatre.
- understand the practices used in 21st-century theatre making.

## Assessment

- External Core Unit – Unit 304e Performance Preparation.
- Internal Core Unit– Unit 306 Planning for a Career in the Creative and Performing Arts.
- Five Optional Internal Units from this selection – Unit 307 Acting for the Camera, Unit 309 Ancient Greek and Roman Theatre, Unit 310 Approaches to Acting, Unit 311 Audition Techniques, Unit 313 Contemporary Theatre, Unit 314 Drama in the Community, Unit 315 Elizabethan or Jacobean Theatre, Unit 321 Working with Masks or Puppetry.

## Progression Routes

Completion of the RSL Level 3 Diploma in Creative and Performing Arts can allow access to a variety of creative undergraduate courses, which might include Drama, Acting, Theatre Studies, English and Media. The course also develops personal skills that are transferable to many other undergraduate courses and ample transferable skills needed for the wider world of work.

## Entry Requirements

GCSE Drama at level 4 or a Merit on a vocational Performing Arts course.

GCSE English at level 4



# 3D Design

## Course Title

A Level Art & Design Three-Dimensional Design

## Awarding Body

AQA

## Course Level

A Level – 2 Years

## Course Description

The A Level in Art and Design 3D Design provides students with the opportunity to develop personal responses to product design briefs, documenting their ideas, observations, experiences, environments and cultures in practical, critical and contextual forms. 3D work will make use of DT skills, offering the opportunity to work in wood, plastic, textiles and ceramics amongst other materials

## Course Content

Students will go through the design process, carrying out research into designers and artists, drawing and experimenting with materials, before developing personal outcomes.

## Assessment

### 2 year A Level:

Year 12 work is mainly skills development in preparation for Year 13,

- Personal Investigation, supported by a 1000-3000-word essay – 60%
- Externally set assignment project, with 15-hour exam – 40%

## Progression Routes

Progression to a design degree course in product design, architecture, Engineering or manufacturing it could also lead to apprenticeships with the option to work on a degree whilst in employment.

## Entry Requirements

Students are required to gain at least a level 4 at GCSE in Art and/or 3D Design to complete this course.



# English Literature

## Course Title

Advanced Level English Literature

## Awarding Body

AQA

## Course Level

A Level – 2 Years

## Course Description

The course covers the study of literature, building on the work completed at GCSE level. The texts that students will study throughout the duration of the course will cover two themes: Love through the ages and World War One. Students will study a range of prose fiction, poetry, drama and non-fiction texts that will span across a range of literary time periods. Students will also be expected to complete a range of wider reading outside of lessons. Teaching is primarily through group and class discussion, developing analysis skills.

## Course Content

For paper one, students will focus on love through the ages. They will be assessed on their understanding of a Shakespeare play (*Othello*), pre 1900 love poetry and *The Great Gatsby*.

Students' second examination will focus on Modern literature. Paper two will assess students' understanding of three texts: one prose (*A Handmaid's Tale*), one drama (*A Streetcar Named Desire*) and one poetry anthology (*The Feminine Gospels*).

In addition to the two examinations, students will also complete an independent coursework task which requires them to compare two texts across time. This task will allow students to explore an area of literature which they are interested in from their own wider and independent reading.

## Assessment

- Paper 1: 40%
- Paper 2: 40%
- NEA: 20%

## Progression Routes

The course offers, through a range of study, the chance to develop analytical skills. Students develop wider reading and research skills which will prepare them for further study. It can be used as the pathway to further study in higher education as well as being a recognised qualification, well known and well regarded by employers.

## Entry Requirements

GCSE level 6 in English Language and Literature.



# Film Studies

**Course Title**

Film Studies

**Awarding Body**

WJEC/EDUQAS

**Course Level**

A Level - 2 year

**Course Description**

We study a diverse range of film, including documentary, film from the silent era, experimental film and short film. The course looks at the significance of film and film practice in national, global and historical contexts. We investigate film and its key contexts (including social, cultural, political, historical and technological contexts). The course aims to analyse and evaluate how films generate meanings and responses through form as an aesthetic medium and how we as spectators respond differently to film.

**Course Content**

11 films to be studied across two years. All films will be studied in relation to the key elements of film, contexts and audience responses. Most films also have a specialist area of study to focus on.

**Assessment****Component 1:** Varieties of film and filmmaking

Written examination: 2½ hours

35% of qualification

**Component 2:** Global filmmaking perspectives

Written examination: 2½ hours

35% of qualification

**Component 3:** Production

Non-exam assessment

30% of qualification

**Progression Routes**

Film is one of the main cultural innovations of the 20th century. Those who study it characteristically bring with them a high degree of enthusiasm and excitement for what is a powerful and culturally significant medium, inspiring a range of career opportunities in creative, technical and directorial positions. Many students continue to university, to pursue education in Media and Film.

**Entry Requirements**

GCSE Grade 5 or above in English

GCSE Grade 5 or above in Media or Film (if studied)



# Food Science & Nutrition

## Course Title

Level 3 Applied Diploma  
Food Science & Nutrition

## Awarding Body

WJEC

## Course Level

Level 3 Diploma – 2 Years

## Course Description

This is a new qualification which provides students with the opportunity to develop their understanding of food, science and nutrition. This course will help students to develop menus, food products and policies that support healthy eating initiatives. It has been designed to offer exciting, interesting experiences that focus learning for 16 - 19-year-old learners through applied learning, i.e. through the acquisition of knowledge and understanding in purposeful, work-related contexts, linked to the food production industry.

## Course Content

Students will complete three units over the two-year qualification in the following areas:

- Meeting Nutritional Needs of Specific Groups
- Ensuring Food is Safe to Eat
- Experimenting to Solve Food Production Problems
- Current issues in food science and nutrition

## Assessment

Written examination and internally assessed assignments

- 2 written exams
- Graded synoptic assessment

Final grade awarded - PASS/MERIT/DISTINCTION/DISTINCTION\*

## Progression Routes

Progression to a food degree course in nutrition or public health. It could also lead to employment in food science/public health.

- BSc Food and Nutrition
- BSc Human Nutrition
- BSc (Hons) Public Health Nutrition
- BSc (Hons) Food Science and Technology

## Entry Requirements

GCSE Food Preparation & Nutrition level 4 or above



# French or Spanish

## Course Title

Spanish A Level

## Awarding Body

AQA

## Course Level

A Level – 2 Years

## Course Description

An A-level in a modern foreign language helps students develop confident, effective communication skills in the chosen language and a thorough understanding of the culture of countries and communities where it is spoken. It develops an interest in, and enthusiasm for, language learning and encourages students to consider their study of the language in a broader context.

The approach is a focus on how Spanish society has been shaped, socially and culturally, and how it continues to change. In the first year, aspects of the social context are studied, together with aspects of the artistic life of the country in which the language being studied is spoken. In the second year further aspects of the social background are covered, this time focusing on issues such as life for those on the margins of Spanish-speaking society as well as looking at the positive influences that diversity brings. Students also study aspects of the political landscape in the Hispanic country, looking at immigration from the political perspective and at the way in which political power is expressed through action such as strikes and demonstrations. They also look at how their peers in the target language country engage in political life.

## Course Content

Students study all sub-themes in relation to any country or countries in which the target language is spoken

- The changing nature of family
- The 'cyber-society'
- The Place of voluntary work
- Positive features of a diverse society
- Life for the marginalised
- How criminals are treated
- A culture proud of its heritage
- Contemporary francophone music
- Cinema: the 7<sup>th</sup> art form
- Teenagers, the right to vote and political commitment
- Demonstrations, strikes – who holds the power?
- Politics and immigration
- Grammar
- A target language film
- A target language novel

## Assessment

- Paper 1: Listening, Reading and Writing
- Duration: 2 hours 30 minutes; total raw mark: 100
- Paper 2: Writing
- Duration: 2 hours; total raw mark: 80
- Paper 3: Speaking
- Duration: 21–23 minutes (including 5 minutes supervised preparation time); total raw mark: 60

## Progression Routes

BA Honours in a language, BA Honours joint degree comprising a language and a second subject, BA Honours degree major in subject 1 and minor in subject 2

## Entry Requirements

Relevant MFL GCSE Spanish: Level 6 or above.



# Geography

**Course Title**  
Geography

**Awarding Body**  
AQA

**Course Level**  
A Level – 2 Years

## Course Description

A Level Geography is about understanding the world around us. The ways in which land and the environment change over time are important, as is the relationship between humans and the earth in a variety of places globally and locally. Students will be expected to develop their own views in relation to these issues and understand the views and roles of others.

## Course Content

### Year 12

- Physical geography:
  - ⇒ Water and carbon cycles
  - ⇒ Coastal systems and landscapes
  - ⇒ Hazards
- Human geography:
  - ⇒ Changing places

### Year 13

- People and the environment
- Geography fieldwork investigation
- Geographical skills
- Global systems and global governance

## Assessment

- A Level – 2 examinations, each 2 ½ hours
- Non-examination assessment

## Progression Routes

A Level Geography is very well recognised by employers and universities because it requires students to develop a deep understanding of the world around them. They will also be able to understand a variety of information quickly and assess its importance. Therefore, the course is well suited to students who are continuing their education or choosing to find challenging work in the 21st Century.

## Entry Requirements

Students are required to gain at least level 4 or above including English and Mathematics.



# Health & Social Care

**Course Title**

BTEC Level 3 National  
Extended Certificate in Health  
& Social Care

**Awarding Body**  
Pearson**Course Level**

Level 3 – 2 Years

**Course Description**

This course is equivalent to 1 A-level and is graded Pass to Distinction\*. It is designed to introduce students to a wide variety of work in a range of health and social care settings. This course will also develop various skills which are required when working in health and social care settings, such as communication, independence, initiative and research.

**Course Content (Year 1)**

- Unit 1 - Human Lifespan Development (Exam)
- Unit 5 - Meeting Individual Care Needs (Coursework)

**Course Content (Year 2)**

- Unit 2 - Working in Health and Social Care (Exam)
- Unit 14 - Physiological Disorders and their care (Coursework)

**Assessment**

- 42% Coursework
- 58% Examination

**Progression Routes**

All units studied are applied to the care sector, which includes health care settings, early years care and education, and social care. As a result of this, completion of this course may lead to further and higher education and on to careers such as nursing, primary education, social worker, residential carer or counsellor.

**Entry Requirements**

Level 6 in English Language.

If a Level 2 qualification in Health & Social Care was obtained, Merit Grade or above is desirable. Although, prior study of the subject at BTEC/GCSE is not necessary but would be advantageous.



# History

**Course Title**  
History

**Awarding Body**  
AQA

**Course Level**  
A Level – 2 Years

## Course Description

A Level History at Arrow Vale will offer students an understanding to assess some of the most significant events, people and processes of the last 200 years. Students will learn about the past in a variety of ways including collaborative work such as debates and presentations. Throughout the course students will be expected to analyse the events of the past, evaluate a variety of opinions about what happened as well as suggest and defend their own interpretations.

## Course Content

### Year 12

#### Unit 1 - The British Empire, c1857–1967

This option allows students to study in breadth issues of change, continuity, cause, and consequence in this period through the following key questions:

Why did the British Empire grow and contract? What influenced imperial policy? What part did economic factors play in the development of the British Empire? How did the Empire influence British attitudes and culture? How did the indigenous peoples respond to British rule? How important was the role of key individuals and groups and how were they affected by developments?

#### Unit 2 – The Birth of the USA, 1860-1801

Studying 'The Birth of the USA, 1860-1801' is a fascinating exploration of the crucial era that led to the formation of the United States. This course delves into the American Revolution, Constitution formation, and the early years of the republic, providing valuable insights into the nation's foundations. Beyond historical knowledge, it cultivates critical thinking and analytical skills, fostering an understanding of democratic principles. By connecting past events to the present, students gain a deeper appreciation for their role in a democratic society.

### Year 13

History in Year 13 builds on the knowledge learnt year 12 and extends the periods of study. In addition, students will undertake a personal study, comprising a taught course as well as their own in-depth research and extended essay of 3000 words (Non-Examined Assessment). This will focus on the Civil Rights Movement in America, exploring factors behind the march towards equal rights for African-Caribbean people.

## Assessment

- 2 written exams
- 3 questions (one compulsory) in each exam
- Non-Examined Assessment



# History Continued...

## **Progression Routes**

A Level History is very well recognised by employers and universities because it demonstrates an ability to summarise, analyse and evaluate, as well as write at length to support an opinion. It demonstrates students' ability to think, work and write at the highest analytical levels. Skills such as using evidence and developing opinions are vitally important skills.

## **Entry Requirements**

Students are required to gain a level 6 or higher in GCSE English Language.



# Information Technology

## Course Title

BTEC Level 3 Extended  
Certificate in ICT

## Awarding Body

Edexcel

## Course Level

BTEC Level 3 - 2 Year

## Details of Course and Assessment

“Information Technology (IT)” is not to be confused with “**Computing**” courses. This course is based on the study and use of computers to develop problem-solving skills through the practical application of IT. This qualification is designed for learners who are interested in an introduction into the study of creating IT systems to manage and share information alongside other fields of study, with a view to progressing to a wide range of higher education courses, not necessarily in IT. You will study the role of computer systems and the implications of their use in personal and professional situations. You will also design, create, test and evaluate a relational database system to manage information. There are also Units that focus on the creative use of IT, which includes Using Social Media in Business, Data Modelling and Website Development.

The course is assessed through 360 guided learning hours of study, which is delivered over **four** units of work. This course comprises of 66% coursework and an externally set written examination which is equivalent to 33%. On completion, you will be awarded a **BTEC Level 3 Extended Certificate**, which is equivalent to **one** ‘A-Level’ grade. A successful coursework portfolio is based on the completion of 4 “Passed” units of work, split over the two years of year 12 and year 13. Therefore, you must view this course as two years of study, as no award is issued after the first year.

## Assessment

Continuous assessment together with exam board set controlled assessment tasks in year 12. Exam and continuous assessment in year 13.

## Mandatory Units:

- Information Technology Systems  
⇒ Externally set written exam – 2 Hours
- Unit 2 Creating Systems to manage Information  
⇒ Externally set and assessed under supervised conditions (10 Hours)
- Unit 3 Using Social Media in Business  
⇒ Internally set and assessed
- Unit 1 Information Technology Systems  
⇒ Externally set exam
- Unit 6 Website Development  
⇒ Internally set and assessed  
⇒

## Qualities and Commitment Expected from the Student:

Even though it is not necessary for students to have studied Computing/IT at GCSE level, they must have a very keen and lively interest in IT. Students will need a logical mind with a persistent and methodical approach to solving problems. All students will be expected to do additional reading and study outside of lesson times to help develop a wider understanding of the applications of computers and the effects of their use.



# Information Technology Continued...

*This course is best suited to students that prefer a combination of examinations and vocational, assignment-based learning and can work maturely and independently on portfolios of work, based on different tasks. A key requirement from all students is their commitment to work hard and meet all assignment deadlines.*

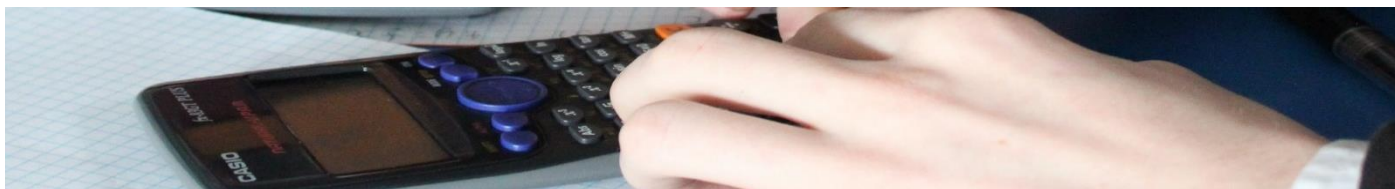
## **Progression Routes**

All BTEC qualifications are nationally recognised by universities, business and industries. They have been designed to provide a broad education as a foundation for training, leading to employment and for study to higher and degree level education courses.

## **Entry Requirements**

Level 4 or above in English and Mathematics.

Level 4 or above in GCSE ICT/IT or a PASS grade in BTEC Level 2 First in ICT course.



# Mathematics

**Course Title**

Mathematics

**Awarding Body**

Edexcel

**Course Level**

A Level - 2 Year

**Course Description**

This qualification will enable students to:

- understand mathematics and mathematical processes in a way that promotes confidence, fosters enjoyment and provides a strong foundation for progress to further study.
- extend their range of mathematical skills and techniques.
- understand coherence and progression in mathematics and how different areas of mathematics are connected.
- apply mathematics in other fields of study and be aware of the relevance of mathematics to the world of work and to situations in society in general.

**Course Content**

Pure Maths, including proofs; algebra; geometry; sequences and series; trigonometry; exponentials and logarithms; differentiation and integration; and vectors.

Statistics and mechanics, including statistical sampling; data presentation and interpretation, probability, statistical distributions, quantities and units in mechanics, kinematics and forces & Newton's Laws

**Assessment**

- Paper 1 & 2: Pure Mathematics
- Paper 3: Statistics and Mechanics
- Each paper is: 2-hour written examination 33.33% of the qualification 100 marks

**Progression Routes**

The academic rigour of A Level mathematics is recognised by all universities and as such it is often chosen as an accompanying A Level for entry into science-based degree courses including physics, chemistry, biology, medicine and psychology, as well as the more obvious routes into pure mathematics, statistics, accountancy and IT based degrees and apprenticeships.

**Entry Requirements**

GCSE level 7 in Mathematics



# Further Mathematics

## Course Title

Further Mathematics

## Awarding Body

Edexcel

## Course Level

A-Level – 2 Year

## Course Description

The study of Further Mathematics will extend students' ability to:

- reason logically and recognise incorrect reasoning
- generalise mathematically
- construct mathematical proofs
- use their mathematical skills and techniques to solve challenging problems which require them

Course content: Core Pure Mathematics: Proof, Complex numbers, Matrices, Further algebra and functions, Further calculus, Further vectors.

Options: Further Statistics, Further Decision Mathematics, Further Mechanics Mathematics

## Course Content

Core Pure Maths 1, including complex numbers, series, matrices, proof and vectors

Core Pure Maths 2, methods in calculus, volumes of revolution, polar coordinates, hyperbolic functions and differential equations

Decision Maths 1, including algorithms, graphs and networks, linear programming and critical path analysis.

Further Statistics 1, including discrete random variables, poisson and geometric distributions, hypothesis testing, central limit theorem and chi-squared tests.

(Other optional units are available in further mechanics and further pure mathematics but the D1/FS1 option is most commonly followed at Arrow Vale)

## Assessment

- Papers 1 & 2: Core Pure Maths
- Paper 3 & 4: two optional units
- Each paper is: 1.5-hour written examination 25% of the qualification 75 marks

## Progression Routes

A-level Further Mathematics enhances the opportunities for the progression routes described for Mathematics. Additionally, it is a key requirement for Maths and Maths associated degrees at the most prestigious universities.

## Entry Requirements

GCSE level 7 in Mathematics (level 8 preferred) – taking the AQA L2 Certificate in Further Maths in Y11 is also useful preparation for Further Maths A-level



# Music

## Course Title

BTEC Level 3 National  
Extended Certificate in Music  
Performance

## Awarding Body

Pearson

## Course Level

Level 3  
National

## Course Description

Music is constantly evolving, inspiring creativity and expression that few other subjects can. Developing and applying musical knowledge and skills can ensure that students form a personal and meaningful relationship with music. They will be encouraged to engage critically and creatively through research, practical application, evaluation and review.

## Course Content

The qualification has a suggested structure of 360 Guided Learning Hours, equivalent in size to one A Level. There are four units to complete over the two-year period – Practical Music Theory and Harmony (Unit 1), Professional Practice in the Music Industry (Unit 2) and Ensemble Music Performance (Unit 3) are mandatory. A fourth optional unit must be selected from the following: Composing Music (Unit 4), Music Performance Session Styles (Unit 5), Solo Performance (Unit 6) and Improvising music (Unit 7). IT will be used regularly in lessons – Office 365 software for report writing and presentations, as well as specialist music composing programs.

## Assessment

- Units 1 and 4-7 are assessed internally.
- Units 2 and 3 are assessed externally (work set and marked by Pearson within a two-week period).

Students will be expected to work on building evidence for each unit, submitting completed work periodically. This will ensure that progress is being made towards targets set, developing musical skills and applying these to real life situations.

## Progression Routes

University degrees in music, as well as specialist music institutions offering degrees in both contemporary and classical music disciplines are options on completion of the course.

## Entry Requirements

Students who have studied GCSE Music or the BTEC Level 2 Tech Award in Music Practice will already have a strong understanding of the requirements for the course, as well as the processes for musical development, practice and consolidation. Students should have the ability to play (at least one) instrument to a minimum of Grade 5 standard / equivalent, alongside music theory knowledge and an ability to read different forms of notation.



# Photography

## Course Title

Art and Design : Photography

## Awarding Body

AQA

## Course Level

A Level - 2 Year

## Course Description

The A Level in Art and Design: Photography provides students with the opportunity to develop personal responses to ideas, observations, experiences, environments and cultures in practical, critical and contextual forms. The flexibility of the course allows students to work from their strengths in order to produce an extended collection of photographic work based on an idea, concept, theme or issue which demonstrates the students' ability to sustain work from an initial starting point.

## Course Content

Students will investigate a range of artists and photographers, learn a range of different photography and editing techniques, develop creative thinking and analytical skills and respond to given titles in order to generate a body of developmental work and outcomes. Students will be required to undertake regular independent photoshoots outside of school to ensure a creative portfolio, which will help students to get the higher marks.

## Assessment

### 2 year A Level:

Year 12 work is mainly skills development in preparation for year 13,

- Personal Investigation, supported by a 1000-3000-word essay – 60%
- Externally set assignment project, with 15-hour exam – 40%

## Progression Routes

The successful completion of an A Level in Art and Design: Photography will help to lay an appropriate foundation for further study of Photography or related subjects in Higher Education such as Art, Graphic Design, Media or Marketing. In addition, it is suitable for the diverse range of candidates who wish to develop their interest in and enjoyment of photography.

## Entry Requirements

Students must have access to a DSLR camera outside of school.

Students must have undertaken GCSE Photography and achieved a 4 or above, in order to ensure an understanding of the skills.



# Physics

**Course Title**  
Physics

**Awarding Body**  
OCR

**Course Level**  
A Level - 2 year

## Course Description

The Physics course takes you on a thrilling journey in discovering the science behind 'matter and energy'. The content is divided up into manageable sized topics allowing the learning of new and existing concepts to be secured before developing the skill of application. Physical science is continuously expanding in the modern world with new developments being discovered all of the time, most recently being the CERN Large Hadron Collider. Taking Physics can provide an entry into a range of higher education routes (not just science based) and can support many employment opportunities.

## Course Content

**Year 12 :** Students will complete four topics – Development of practical skills in physics, foundations of physics, forces and motion and also electrons, waves and photons.

**Year 13 :** Students will complete a further two units in year 13 – Newtonian world and astrophysics followed by particles and medical physics.

Throughout the two year course, students also need to complete 12 compulsory practical's for the pass or fail Practical assessment.

## Assessment

Throughout the course students will be provided with continuous support, guidance and examination practice to allow them to succeed during assessment.

A2 – 2 exam papers, each 2 ¼ hours plus 1 of 1 ½ hours, and you shall be assessed on your practical skills.

## Progression Routes

A Level Physics is a good academic option which combines well with many other subjects, science and non-science based, providing a firm foundation for those who wish to continue to higher education. Physics is necessary for many career pathways, including Medical Physics, Communications, Energy, Meteorology, and Nanotechnology. Many employers, for those who wish to seek employment, also hold it in high regard.

## Entry Requirements

GCSE level 6 in Science/Physics, English and Mathematics.



# Psychology

**Course Title**  
Psychology

**Awarding Body**  
AQA

**Course Level**  
A Level - 2 year

## Course Description

A Level Psychology offers the opportunity to study human behaviour and the human mind in a scientific fashion. Students will learn some of the common theories of Psychology and will analyse these through practical experiments and data collection.

## Course Content

### Year 12

Students will study two topics - Introductory topics in Psychology where students will learn about social influence, memory and attachment. The second unit, Psychology in Context includes approaches in psychology, psychopathology and research methods.

### Year 13

In Year 13, students will build on their knowledge from year 12 and study further content for Issues and options in Psychology. Students will be expected to demonstrate knowledge and understanding of psychological concepts, theories, research studies, research methods and ethical issues in relation to the specified Paper 3 content. They will apply psychological knowledge and understanding in a range of contexts; analyse, interpret and evaluate psychological concepts, theories, research studies and research methods and evaluate therapies and treatments in terms of their appropriateness and effectiveness. The further topics that student's study in Year 13 are issues and debates in Psychology, cognition and development, schizophrenia and aggression.

## Assessment

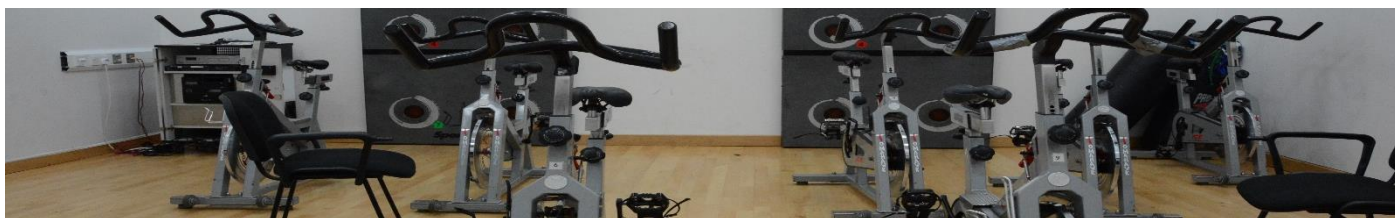
A Level – 3 exam papers, each 2 hours long and worth 96 marks.

## Progression Routes

A Level Psychology is well suited to those students who have an interest in pursuing the subject as a career, such as an Educational Psychologist or Clinical Psychologist. It complements subjects such as Health and Social Care, Biology or Forensic Science. It is a rigorous subject that will prepare all students for either university or employment because it leads to a better understanding of human nature, and the research methods section requires students to be analytical.

## Entry Requirements

Level 6 in English Language, Maths and Science.



# Sport

## Course Title

BTEC Level 3 National  
Extended Certificate in Sport

## Awarding Body

Pearson

## Course Level

Level 3 - 2 year

## Course Description

The course is an Applied General qualification for post-16 learners who want to continue their education through applied learning and who aim to progress to higher education and ultimately to employment in the sport sector. This course will develop various skills which are required when working in the sports sector such as communication, problem solving, self-management, adaptability and resilience

## Course Content

### Course Content (Year 1)

- Unit 1 - Anatomy and Physiology (Exam)
- Unit 3 - Professional Development in the Sports Industry (Coursework)

### Course Content (Year 2)

- Unit 2 - Fitness Training and Programming for Health, Sport and Well-being (Exam)
- Unit 4 - Sports Leadership (Coursework)

## Assessment

- 66% Examination
- 33% Coursework Evidence

## Progression Routes

All units studied are applied to sport and sports industries. As a result of this, completion of this course may lead to further and higher education and on to careers such as sports coaching, PE teaching, physiotherapy and sports administration.

## Entry Requirements

Level 6 in English Language.

If a Level 2 qualification in Sport was obtained, Distinction Grade or above is desirable. Although, prior study of the subject at BTEC/GCSE is not necessary but would be advantageous.



# University

## Impact of Subject Choices and Performance

The option choices you make at Key Stage 5 do have an impact on the university you can go to. The following information is designed to give you a clear view of what various universities require and the impact of your choices. Universities are entitled to set their own admission criteria, and this can be based on the follow:

- Facilitating A levels at specific grades including specific GCSE subjects and grades.
- Points that can be made up of either or combined GCE and BTEC courses. As a rule of thumb, a GCE A grade and a BTEC Distinction are worth 48 points, a GCE C and BTEC Merit are worth 32 points. Finally, a GCE E grade and BTEC Pass are both worth 16 points.

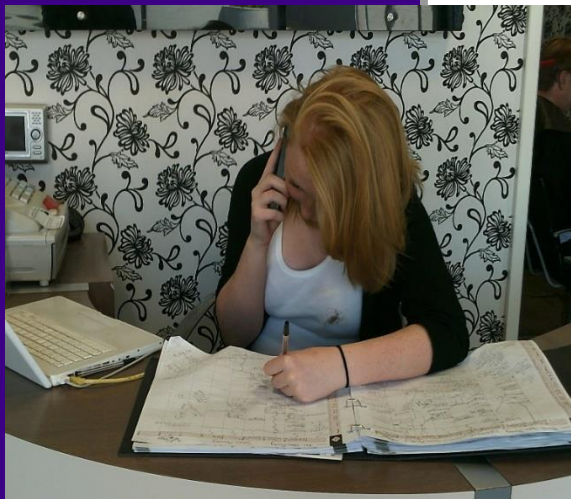
Recently the top 20 universities, called 'The Russell Group', for the first time ever gave clear guidance on the courses required at Level 3 (A level or BTEC National courses). The starting point is that a student must have undertaken a combination of at least two facilitating A levels and then entry had to be on achieving specific grades.

The Russell Group Universities are:

- ⇒ University of Birmingham
- ⇒ University of Bristol
- ⇒ University of Cambridge
- ⇒ Cardiff University
- ⇒ University of Edinburgh
- ⇒ University of Glasgow
- ⇒ Imperial College London
- ⇒ King's College London
- ⇒ University of Leeds
- ⇒ University of Liverpool
- ⇒ London School of Economics and Political Science
- ⇒ University of Manchester
- ⇒ Newcastle University
- ⇒ University of Nottingham
- ⇒ University of Oxford
- ⇒ Queen's University Belfast
- ⇒ University of Sheffield
- ⇒ University of Southampton
- ⇒ University College London
- ⇒ University of Warwick

All other universities set their entry requirements upon a combination of points

# Work Experience



All students in Year 12 all undertake a minimum of one-week work experience in an area of their choice.

In some course's students will be able to access work experience one morning or afternoon per week throughout the year to supplement career aspirations and practical application of learning. We have a range of contacts, but we also encourage students to seek opportunities that best match their aspirations for the future.

RSA ACADEMY  
ARROW VALE



# Enrichment

All students can access a wide variety of enrichment experiences, from debating and Young Enterprise, to cooking for university. Some of these experiences are student led and some are provided by staff. The aim is to make sure that students have experiences beyond their studies and are able to pursue areas of interest.









# Index Page

<b>Applied Science</b> Course Level: BTEC Level 3 National Extended Certificate	1
<b>Art &amp; Design</b> Course Level: A Level	2
<b>Biology</b> Course Level: A Level	3
<b>Business</b> Course Level: BTEC Level 3 National Extended Certificate	4
<b>Chemistry</b> Course Level: A Level	5
<b>Drama</b> Course Level: A Level	6
<b>3D Craft Design</b> Course Level: A Level	7
<b>English Literature – Advanced Level</b> Course Level: A Level	8
<b>Film Studies</b> Course Level: A Level	9
<b>Food Science &amp; Nutrition</b> Course Level : Level 3 Diploma	10
<b>Spanish</b> Course Level: A Level	11
<b>Geography</b> Course Level: A Level	12
<b>Health and Social Care</b> Course Level: BTEC Level 3 National Extended Certificate	13
<b>History</b> Course Level: A Level	14 - 15
<b>ICT</b> Course Level: BTEC Level 3 Extended Certificate	16 – 17
<b>Mathematics</b> Course Level: A Level	18
<b>Further Mathematics</b> Course Level: A Level	19
<b>Music</b> Course Level: RSL Level 3 Subsidiary Diploma for Music Practicioners	20
<b>Photography</b> Course Level: A Level	21
<b>Physics</b> Course Level: A Level	22
<b>Psychology</b> Course Level: A Level	23
<b>Sport</b> Course Level: BTEC Level 3 National Extended Certificate	24
<b>University : Impact of Subject Choices &amp; Performance</b>	25
<b>Work Experience / Enrichment</b>	26

# Sixth Form Curriculum



**Arrow Vale High School**  
Matchborough Way  
Redditch  
Worcestershire  
B98 0GF  
01527 526800

[www.arrowvaleschool.org.uk](http://www.arrowvaleschool.org.uk)



*Arrow Vale, A high school operated by Central Region Schools Trust, a charitable company limited by guarantee, registered in England and Wales. Company number 08166526. Registered Office: Suite 806, Assay Offices, 141 Newhall Street, Birmingham B3 1SF. For further information about the school governance and policies please refer to our website.*



**Central Region  
Schools Trust**

*Founded by the RSA*

Updated October 2024